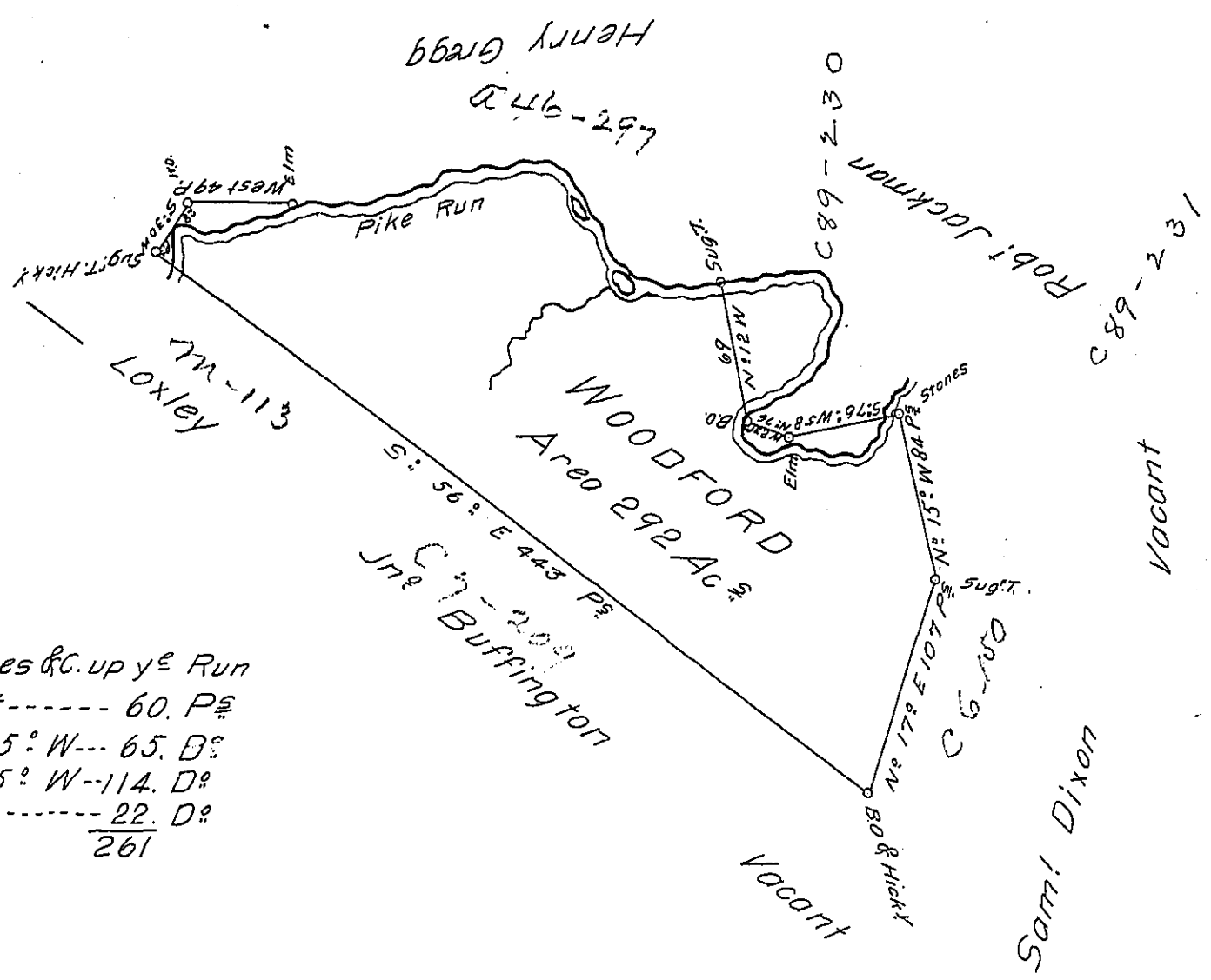


646.298



Courses & C. up y^e Run
 West----- 60. P^e
 N^o 25^o W--- 65. D^o
 S^o 75^o W--114. D^o
 West----- 22. D^o

 261

A Draught of a Survey called "Woodford" situate on Pike Run in Washington County cont^g 292 Ac^s and the usual Allow^{ce} for Highways &c. executed August the 19th 1786 in Pursuance of a Warrant granted to Tho^s Dowler for 250 Ac^s dated June 3^d 1786.

Jm^o Lukens Esq^o S. Genl. }
 Presley Nevill } D.Ss
 Matt^o Ritchie }

IN TESTIMONY that the above is a copy of the original remaining on file in the Department of Internal Affairs of Pennsylvania, made conformably to an Act of Assembly approved the 16th day of February, 1833, I have hereunto set my Hand and caused the Seal of said Department to be affixed at Harrisburg, this ninth day of June 1904

Hoacp Benson
 Secretary of Internal Affairs.